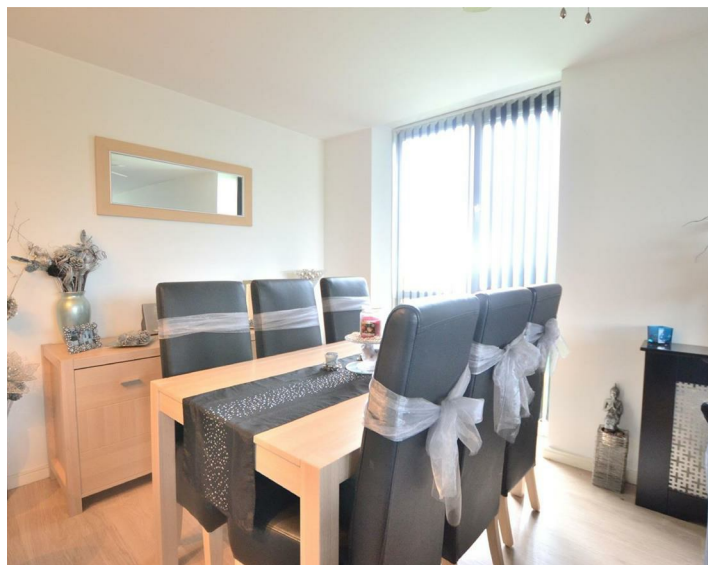




111 View 146, Liverpool, L5 3BA

Asking Price £94,995 Leasehold

www.
cityresidential
.co.uk



About the Property

** SERVICE CHARGE PAID UP UNTIL JULY 2021 **

Proudly brought to the market is this immaculately presented two bedroom apartment.

Located on 10th floor of the View 146 development, this beautifully presented apartment benefits from stunning views over from its timber decked balcony.

Offered for sale with no onward chain the apartment would make an ideal first time buy or investment opportunity.

The accommodation briefly comprises; entrance hall, living/dining room which provides access onto a timber decked balcony, fully fitted kitchen, two double bedrooms and family bathroom.

The property further benefits from a secure allocated parking space.



TOTAL APPROX. FLOOR AREA 830 SQ.FT. (77.1 SQ.M.)
Whilst every attempt has been made to ensure the accuracy of the floor plan contained here, measurements of doors, windows, rooms and any other items are approximate and no responsibility is taken for any error, omission, or mis-statement. This plan is for illustrative purposes only and should be used as such by any prospective purchaser. The services, systems and appliances shown have not been tested and no guarantee as to their operability or efficiency can be given.
Made with Metropix ©2020

Energy Efficiency Rating		
	Current	Potential
Very energy efficient - lower running costs		
(92 plus) A		
(81-91) B		
(69-80) C		
(55-68) D		
(39-54) E		
(21-38) F		
(1-20) G		
Not energy efficient - higher running costs		
England & Wales	EU Directive 2002/91/EC	

